

ELEV8

design awards

BY BUILDINGS

CALL FOR ENTRIES

**A NEW COMPETITION HONORING ARCHITECTURAL AND INTERIOR
DESIGN EXCELLENCE IN THE COMMERCIAL BUILT ENVIRONMENT**

ENTRY FORMS DUE: DECEMBER 13, 2024

PORTFOLIO DUE: JANUARY 31, 2025



IS

ARCHITECTURAL
PRODUCTS

Honoring architectural design excellence in the built environment.



SHOWCASE YOUR DESIGN: ANNOUNCING THE INAUGURAL 2025 ELEV8 DESIGN AWARDS!

Attention architects and designers! It's time to reveal your groundbreaking work in the all-new Elev8 Design Awards by Buildings.com.

The Elev8 Design Awards celebrates the pinnacle of commercial building design and operations across North America. From innovative thinking to sustainable practices, we're honoring projects that redefine excellence in architecture and interior design.

Categories: Whether it's new construction or a stunning renovation, we're seeking excellence in eight project categories and building types (see next page for full list). This is your chance to impress building owners, facility managers, and developers with your outstanding capabilities.

Make an Impact: Elev8 isn't just about aesthetics—it's about making a difference. Impress your clients and potential clients how your designs provide positive impact on people and the planet. Your work could shape the future of the built environment for generations to come.

Advantages to Entering: Winners of the Elev8 Design Awards gain more than just recognition. Your project will be showcased in the Second Quarter 2025 issue of *BUILDINGS*, reaching over 70,000 industry building owners (i.e., potential clients), and will demonstrate your firm's capabilities and commitment to environmentally and socially responsible design practices.

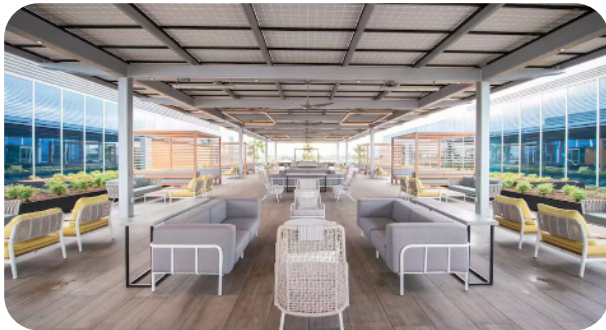
Don't miss out on this unparalleled opportunity to elevate your project, your firm, and your reputation. Enter the Elev8 Design Awards today and let your creativity soar to new heights!

WHY ENTER?

1. Demonstrate your firm's ability to design and construct complex, innovative and sustainable projects.
2. Gain exposure to **THOUSANDS** of commercial/institutional building owners across North America.
3. Get your work published in *BUILDINGS* magazine, received by more than **70,000** building owners and facility professionals.
4. Market your firm and its services to potential clients at minimal cost and time.

8 FEATURED CATEGORIES

- 1. Commercial** - Offices, Banks, Data Centers, Convention Centers
- 2. Institutional** - Government Buildings, Courthouses, Embassies, Research Centers/Laboratories
- 3. Healthcare/Senior Living** - Hospitals, Medical Centers, Health Clinics, Doctors/Dentists Offices, Assisted Living, Memory Care Environments
- 4. Hospitality** - Hotels, Restaurants, Bars, Nightclubs, Theaters/Cinemas
- 5. Mixed Use** - Combined Residential/Commercial, Live-Work Units, Entertainment Districts, Transit-oriented Developments/TODs
- 6. Multifamily** - Luxury Apartments, Affordable Housing, Cooperative Housing, Student Housing, Assisted Living, Memory Care Communities
- 7. Retail/Showroom** - Shopping Malls, Department Stores, Designer Showrooms, Retail Chains, Automotive Dealerships
- 8. Civic/Public** - Libraries, Museums, Art Galleries, Community/Cultural Centers, Places of Worship



JUDGING

The BUILDINGS editorial team will carefully select a panel of judges—representing a mix of architects and designers—who will review submissions. The judging panel will meet, evaluate and select outstanding projects for publication. Primary consideration will be given to the design firm's solution to the client's requirements. The panel of judges will focus on these qualities:

- Aesthetics
- Design innovation
- Functionality & accessibility
- Social impact
- Technology integration
- Sustainability
- Operational efficiency
- Wellness

AWARDS & RECOGNITION

GRAND PRIZE AWARDS

The jury will select two Grand Prize winners, one in New Construction and one in Historic Renovation/Adaptive Reuse. Deluxe commemorative plaques featuring the project's pages from the magazine will be presented to both the firm and its client.

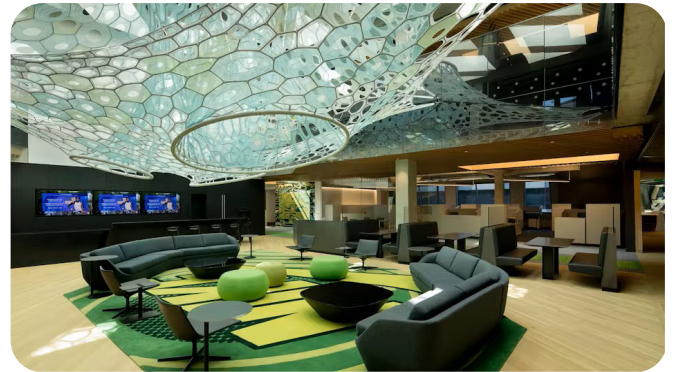
CITATIONS

The jury will award Gold, Silver and Bronze Citations to additional projects exhibiting exemplary features. Commemorative Citation plaques will be presented to both the firm and its client.

AWARD INFORMATION

OUTSTANDING DESIGNS

Projects that exhibit exceptional designs or qualities also will be recognized and selected for publication as Outstanding Designs. These projects are an important part of producing the comprehensive sourcebook for building owners that become the architectural showcase. A commemorative plaque will be presented to these firms.



ENTRY INFORMATION

Entry Form Due Dec. 13, 2024 | Portfolio Due Jan. 31, 2025

COMPLETE THE ATTACHED ENTRY FORM: DUE DECEMBER 13

Complete an entry form for each project you wish to enter and send to Heather Buzzard: hbuzzard@endeavorb2b.com
Or enter online at elev8awards.com

Note: Multiple projects from the same firm, or the same project in multiple categories, can be entered and published. Email to ask about special discounts for entering one project in multiple categories.

UPLOAD PRESENTATION PORTFOLIO: DUE JANUARY 31

BUILDINGS has a streamlined process to send portfolio materials. When you enter, you receive the link to upload images, description, and project data. Upload all materials from your desktop, using a form that saves your submission as you go. If you are chosen for publication, the materials uploaded will be used to create your page(s) in the magazine. No additional materials will be required.

MATERIALS FOR ENTRY:

PROJECT DESCRIPTION

PROJECT DATA

- May include performance metrics, third-party certification documentation, etc.

SPACE PLANS

- One space plan with legend for each floor or area being judged.

IMAGES

- One overall image or rendering that shows the context of the project.
- At least four images or renderings of the project that illustrate various aspects of the entry category.
- If you are entering the Interior Renovation or Historic Preservation category, Before and After images are required.

Projects must have been completed after 2022

PUBLICATION FEE

If your project is selected for publication in the Elev8 Design Awards Showcase, a fee is incurred to help cover judging expenses, and production, printing and distribution of the magazine. Pay nothing when you enter. If published, you receive an invoice in August.

RATES

- 1 page / \$1,990 **Early-bird offer! Send your entry form by TBD to save with a 1-page rate of \$1,750.**
- 2 pages / \$1,875 (\$3,750 total)
- 3 pages / \$1,730 (\$5,190 total)
- 4 pages / \$1,620 (\$6,480 total)

Per-page discounts apply to multiple pages for one project, or when entering multiple projects. Call about special discounts for entering one project in multiple categories.

PAGE LAYOUT OPTIONS

Pages	Photos In Print	Photos	Description	Quote From Owner
1 page	4-5 photos	4 photos	100-175 words	no
2 pages	8-10 photos	8 photos	250-300 words	yes
3 pages	12-15 photos	8 photos	300-400 words	yes
4 pages	15-18 photos	8 photos	400-450 words	yes

STAND OUT WITH A MULTI-PAGE LAYOUT:

- More Exposure
- Quote from the Building owner
- Print ready PDF



EVERY PACKAGE INCLUDES:

BUILDINGS.COM

Every project that appears in the 2025 Elev8 Design Awards Showcase will be featured free, including pictures and project description, in the interactive gallery on buildings.com — with expanded, large-format images. We provide a free award icon to link directly to your project from your website or social media.

PLAQUES

A complimentary plaque is provided to all firms chosen for publication.

EXTRA ISSUES

Receive five complimentary issues of the 2025 May edition of the Elev8 Design Awards Showcase.

PRESS RELEASE

A customized press release will be sent to you for distribution to your local newspapers and associations. *BUILDINGS* will distribute a press release to the national media.

SUBSCRIBER E-NEWSLETTER

Your project is included, with a link to your gallery and firm profile, in our popular subscriber e-newsletter – *BUILDINGS* Buzz.

FREE PRINT-READY PDF!

PRINT YOUR OWN REPRINTS. Receive a free print-ready PDF of your pages from the Elev8 Design Awards Showcase issue when you enter more than one project or for a project with a 2-page layout. Print, post, and give a copy of the PDF to the building owner.



WHO SEES YOUR WINNING PROJECT?

THE ELEV8 DESIGN AWARDS ISSUE: SHOWCASING YOUR ACHIEVEMENTS TO BUILDING OWNERS/ OPERATORS IN BUILDINGS PRINT AND DIGITAL EDITIONS

BUILDINGS is the longest-running and most-respected publication in the B2B commercial building industry – the voice of experience for more than 116 years. Providing trusted news, information, best practices and solutions, *BUILDINGS* helps building owners and operators make smarter decisions regarding the facilities they build, own and operate. This is your chance to get in front of buildings and facilities executives planning new buildings or altering/renovating existing facilities.

SUBSCRIBER E-NEWSLETTER

BUILDINGS Buzz

Delivered twice weekly and features exclusive content, news summaries and case studies designed to keep facilities professional up-to-date with key systems, and more! (Twice Weekly)

The readers of *BUILDINGS* include building owners and facilities managers in these key building market segments:

- Commercial
- Institutional
- Government
- Healthcare
- Hospitality
- Education
- Retail

ENTER ONLINE AT WWW.ELEV8AWARDS.COM OR COMPLETE THE FORM BELOW

ELEV8 2025

design awards

YES! We would like to participate in the 2024 ELEV8 design awards, published in May 2025.

Please reserve _____ full-color page(s) of editorial space for this project.

If selected for publication, we understand that we will be billed for this project as outlined in the "Call for Entries."

Authorized Signature: _____ Date: _____

Purchase Order (if required): _____

PLEASE SEND FUTURE CORRESPONDENCE REGARDING OUR 2025 ELEV8 DESIGN AWARD ENTRY TO:

Name _____

Mailing Address _____

E-mail Address _____

Phone _____

PLEASE FILL OUT FORM COMPLETELY. (PHOTOCOPY FORM TO SUBMIT ONE APPLICATION FOR EACH PROJECT.)

Name of Project _____

City _____ State _____

Projects must have been completed after 2022.

PLEASE LIST THE OFFICE/CONTACT THAT COMPLETED THE PROJECT.

Firm _____

Contact Name _____ Title _____

Address _____

City _____ State _____ Zip _____

ENTRY CATEGORY: (select one)

- Aesthetics
- Innovation in Design
- Functionality & Accessibility
- Social Impact
- Technology Integration
- Sustainability in Design
- Operational Efficiency & Decarbonization
- Wellness

What category is right for your project? Contact

Heather Buzzard at hbuzzard@endeavorb2b.com
for assistance and information about special discounts
when submitting your project in multiple categories.

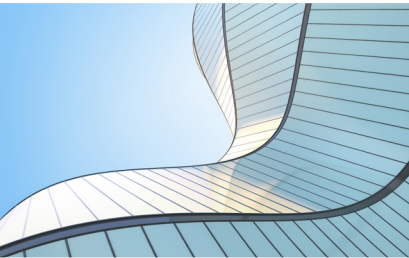
ENTER ONLINE AT WWW.ELEV8AWARDS.COM OR

COMPLETE ENTRY FORM AND EMAIL TO:

Heather Buzzard, Program Manager

hbuzzard@endeavorb2b.com

BUILDINGS



BUILDINGS

30 Burton Hills Blvd, Suite 185,
Nashville, TN 37215

BUILDINGS.COM

ELEV8 design awards

CALL FOR ENTRIES

ENTRY FORMS DUE: DECEMBER 13, 2024

PORTFOLIO DUE: JANUARY 31, 2025

**EARLY-BIRD DISCOUNT FOR ENTRY
FORMS RECEIVED BY TBD**

